

**BACKHOE LOADER  
TLB 825**



# **EVERYTHING FOR JOB SITE EFFICIENCY**



**EQUIPMENT FOR YOUR SUCCESS**

**BACKHOE LOADER**  
**TLB 825**

**PREMIUM SEAT**

Operator’s swivel seat allows all necessary adjustments and features a high back, headrest, armrests, and inertia seat belt. The pack comes as standard.

**STEERING COLUMN**

Tilt-adjustable. Comfortable low-effort steering wheel with a knob to facilitate steering the machine with just one hand.

**OPENING SIDE WINDOWS**

The door top windows can be fully opened and fixed for better ventilation.

**OPENING REAR WINDOW**

One-piece up-an-over rear window opens easily and can be fixed in the opened position. It can serve as a convenient rain visor and makes the operator’s job comfortable in the warm period.



**ADDITIONAL CONTROL**

Ergonomic pedal for the hydraulic rock breaker and extendable dipper stick control considerably reduces the operator fatigue.

**FRONT WHEEL FENDERS**

Made of resilient and durable plastic, the fenders are wider than the wheels and offer good windshield protection from splashes and dirt. To prevent deformation, the fenders are mounted on damping brackets turning together with the wheels.

**FUEL AND HYDRAULIC TANKS**

All-welded steel tanks are made removable to facilitate cleaning and repairs. Strainers in the tank filler necks prevent contamination.

**BOOM DOUBLE TRANSPORT LOCK**

Unique double transport lock secures the backhoe preventing it from lowering and turning. Fully controllable from inside, it does not require the operator to leave the cab.



## BACKHOE LOADER TLB 825

### CABIN

The cabin has everything to facilitate the operator's job:

- ▶ Low noise level inside the cab
- ▶ Panoramic glazing ensures excellent all-around visibility. Door windows can be opened fully or partially to provide for necessary ventilation
- ▶ Adjustable spring seat with a headrest, armrests and seat belt ensures maximum comfort for the operator
- ▶ Tilt-adjustable steering column will suit any operator
- ▶ Sound and visual signals include parking brake activation, high transmission oil temperature, high engine coolant temperature, engine oil pressure, hydraulic system oil filter and air filter clogging
- ▶ Air recirculation system ensures quick cab heating in cold weather
- ▶ Comfortable ROPS/FOPS certified cab
- ▶ Ergonomically positioned controls to facilitate work
- ▶ Spacious storage compartments
- ▶ Two external rear view mirrors
- ▶ Wide door opening, self-cleaning footsteps and large grab rails for easy access



- ▶ Indicator lamps for 4WD mode engagement, emergency alarm, high beam, battery low, turn indicators and front/rear wipers
- ▶ Adjustable rear working lights
- ▶ Powerful heater with a 3-speed fan supplies air to 2 forward and 3 rear vents
- ▶ Options:
  - air conditioner
  - cup holders
  - coat hook







## BACKHOE LOADER TLB 825

### TRANSMISSION

Selectable front wheel drive (4WD mode) increases the cross-country abilities. 2WD mode saves fuel and extends transmission service life during high-speed driving on paved roads. 4 speed servo power synchro transmission enables gear shifting and changing direction while driving.

### MANEUVERABILITY

The backhoe loader offers the ease of steering and maneuverability on the construction site owing to the extremely small turning circle which can be additionally reduced by over one meter using one-side braking.

### CROSS-COUNTRY ABILITY

Cross-country tires and road clearance under axle housings, stabilizers, and backhoe carriage ensure a high cross-country ability of the machine. The backhoe loader is very stable and has a good surface contact due to pivoted front axle suspension with a large pivot angle.





# BACKHOE LOADER TLB 825

## LOADER

Excellent lifting and dump (hinge pin height) capacity allow the machine to handle a multitude of loading tasks with high efficiency. Sophisticated and rugged loader beam design combined with original bucket linkage ensures longtime failure-free operation and low maintenance costs. Hydro mechanical self-levelling system prevents spillage and retains the load during lifting. Beam float function enables the machine to level material on the ground easily and fill the bucket from a level surface, e.g. during snow removal.

## 7 IN 1 BUCKET

- ▶ Digging
- ▶ Loading
- ▶ Dozing
- ▶ Scraping
- ▶ Spreading and Levelling
- ▶ Grabbing
- ▶ Object handling, lifting capacity of 1000 kg







## BACKHOE LOADER TLB 825

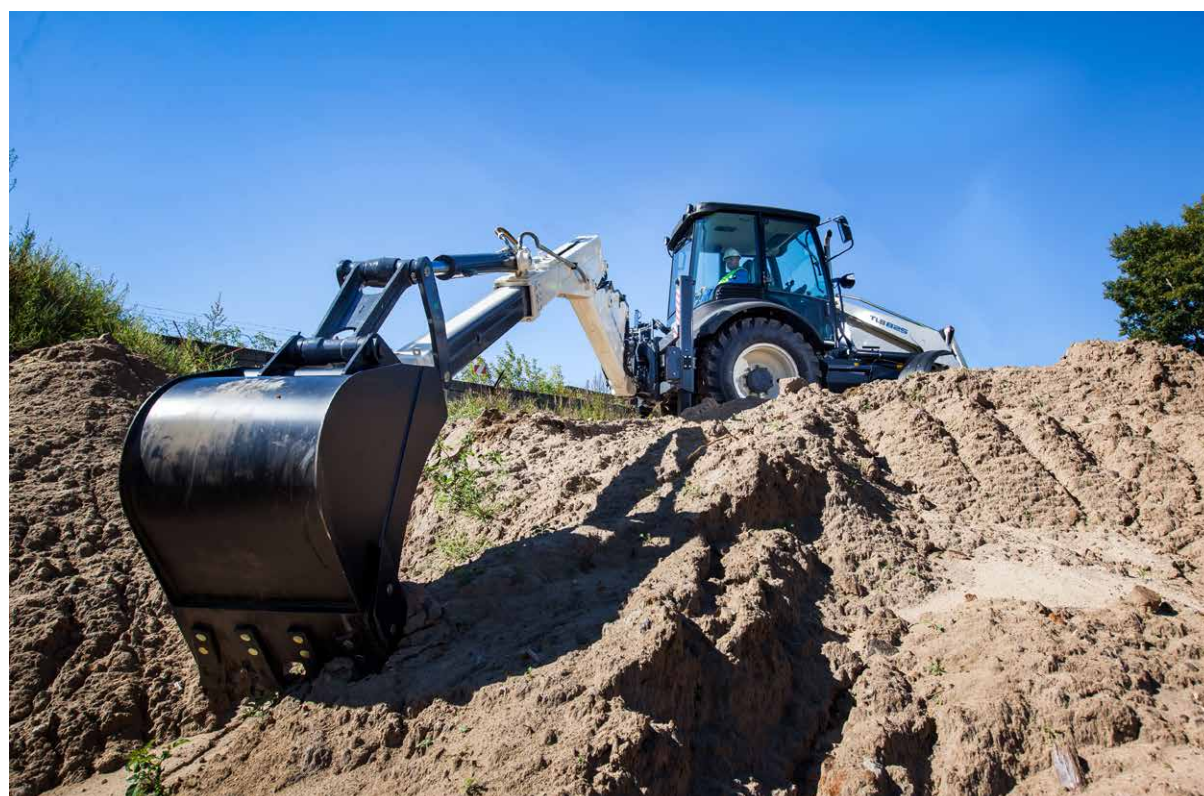
### BACKHOE

Exceptional backhoe working range allows the machine to operate in restricted spaces without moving around and save time and fuel. All this is made possible by high-performance standard and extendable dipper sticks, and unmatched backhoe sideshift.

Backhoe sideshift carriage is open-type and prevents dirt accumulation.

High-strength backhoe boom features forged eyes.

Extendable dipper guides can be easily serviced from the outside. The stick does not require greasing when in operation.





# BACKHOE LOADER TLB 825

## AXLES

Axle assemblies with fully unloaded half-axes and planetary reduction gears in wheel hubs are built for heavy-duty applications and ensure high lifting capacity and traction.



## BRAKE SYSTEM

Powerful brake system offers three modes – rear wheel braking, all wheel braking in 4WD mode, and all wheel braking in 2WD mode. Two circuits of the brake system engage separately for the right and left rear wheels, and have two separate control pedals. Multidisc self-adjusting braking mechanisms automatically equalize brake loads and ensure a straight-line braking. Brake discs offer excellent service life due to wear-resistant Kevlar coating and oil cooling.



## ENGINE

The backhoe loader is powered by a reliable Tier 2 Perkins diesel engine – a well-known 1104C-44T with 4 cylinders and turbocharging – delivering high torque in a wide range of speeds. The torque margin is 29 %.



## HYDRAULIC SYSTEM

Open circuit hydraulic system features a reliable high-performance tandem gear pump and lever-operated sectional control valve keeping the job functions under control. Precision excavation and high torque transmission are ensured by the “hydraulics discharge” function – draining completely one pump flow to the tank.







## BACKHOE LOADER TLB 825

### HOOD

One-piece hood has no removable side panels or other detachable parts which can be damaged or lost. It provides for comfortable access to the engine from both sides due to its fully back-tilting design. A convenient safety stop can be set within just a few seconds to secure the loader equipment during maintenance operations.





SPECIFICATIONS

ENGINE

Model	Perkins 1104C-44T
Number of cylinders	4 шт.
Displacement	4.4 l
Rated speed	2200 rpm
Gross power at 2200 rpm	68.5 kW
Maximum torque at 1400 rpm	395 Nm

ELECTRICAL SYSTEM

Battery voltage	12 V
Battery capacity	132 Ah
Alternator	75 A

CAPACITIES

Fuel tank	120 l
Engine cooling system	16 l
Engine oil (including filter)	11 l
Transmission	20 l
Rear axle (including final drives)	17.5 l
Front axle (including final drives)	10 l
Hydraulic tank	90 l

WHEELS AND TIRES

	Standard traction	Heavy duty
Front	12.5x18-12PR	9x16-16PR
Rear	16.9x28-12PR	14x25-20PR

TRAVEL SPEEDS, FORWARD AND REVERSE

Maximum speed at 1st gear	5.4 km/h
Maximum speed at 2nd gear	8.6 km/h
Maximum speed at 3rd gear	19.9 km/h
Maximum speed at 4th gear	40 km/h

TURNING CIRCLES

	Over tires	Over bucket
Without brakes	8.4 m	11.1 m
With brakes	7.2 m	10.0 m

HYDRAULICS

Pump flow at 2200 rpm	142 (80+62) l/min
Operating pressure	225 bar

LOADER DIMENSIONS

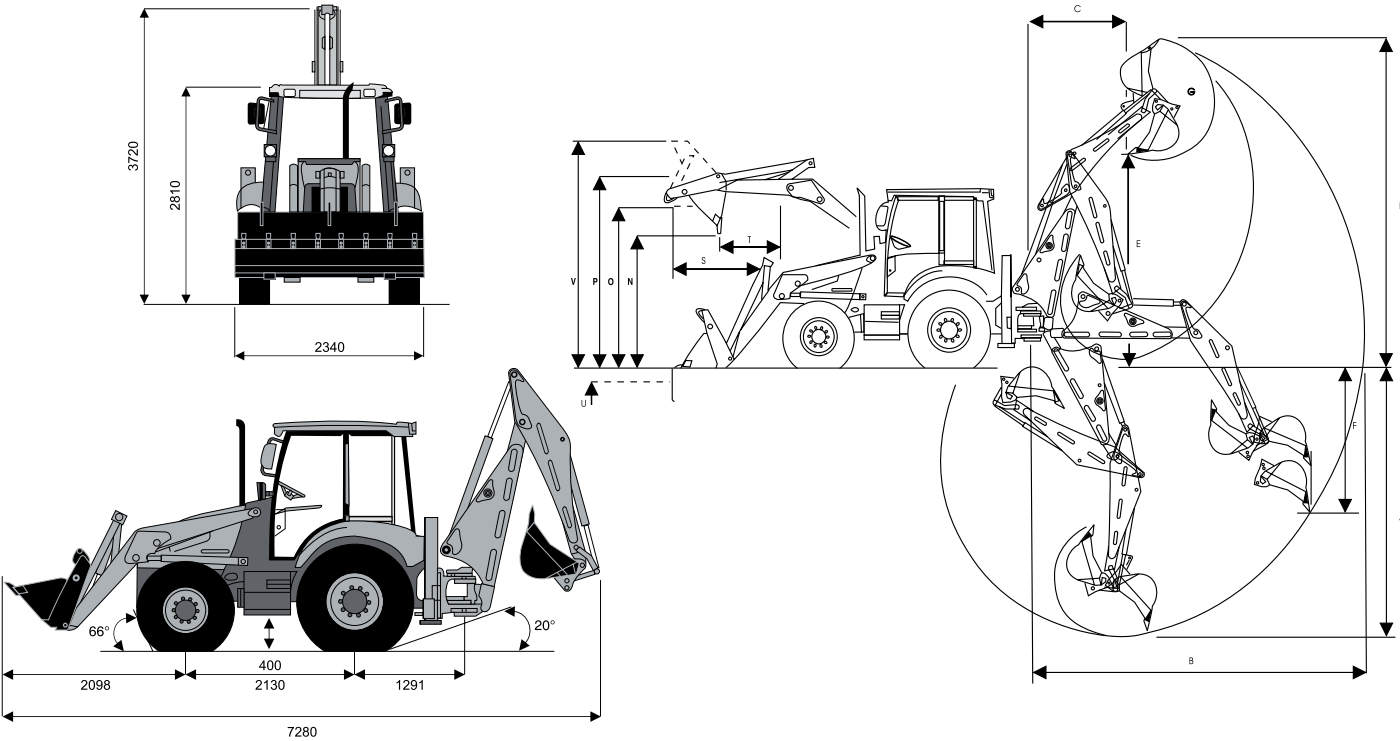
N. Maximum dump clearance – at 45°	2741 mm
T. Maximum reach at full height – at 45°	829 mm
O. Loadover height	3343 mm
S. Max. reach at full height	1282 mm
P. Hinge pin height	3583 mm
U. Maximum dig depth	156 mm
V. Overall operating height	4313 mm
Maximum dump angle	57°

BACKHOE DIMENSIONS

	Standard dipper	Extendable dipper
A. Maximum dig depth	4741 mm	5782 mm
B. Reach – ground level to slew	5730 mm	7017 mm
C. Maximum loading reach	1996 mm	2924 mm
D. Operating height	5659 mm	6670 mm
E. Maximum dumping height	3553 mm	4564 mm
Maximum dumping height on stabilizer legs	3871 mm	4882 mm
G. Maximum bucket rotation degree	194°	194°
Carriage shift	1286 mm	1286 mm

BACKHOE PERFORMANCE

	Standard dipper	Extendable dipper
Dipper tearout	39.45 kN	26.44 kN
Bucket tearout	52.19 kN	52.60 kN
Maximum lifting capacity	1384 kg	1297 kg



DIMENSIONS

Overall transport length	
- Backhoe equipment retracted	5920 mm
- Backhoe equipment set along travel axis	7280 mm
Overall width	2340 mm
Overall height	3720 mm
Height over cab	2810 mm
Wheel base	2130 mm
Road clearance	400 mm
Operating weight	7600 kg

BACKHOE BUCKET

900 mm	0.31 m³	192.8 kg
750 mm	0.25 m³	167.8 kg
600 mm	0.18 m³	142.2 kg
450 mm	0.12 m³	116.7 kg

LOADER BUCKET

Width	2311 mm
Capacity	1.0 m³
Weight	461.7 kg
Bucket breakout	47.56 kN
Lift capacity to full height	3465 kg



## STANDARD EQUIPMENT

- ▶ Perkins engine
- ▶ Carraro Synchro Shuttle transmission with servo control and torque converter with 2.88:1 stall ratio
- ▶ Carraro axles with disc brakes.  $\pm 16^\circ$  front axle oscillation. Front and rear wheel fenders
- ▶ Casappa tandem gear pump with 80+62 l/min flow
- ▶ Lever controlled Valvoil directional control valves
- ▶ Loader equipment:
  - multipurpose 7 in 1 bucket, 1 m<sup>3</sup> capacity
  - hydro mechanical bucket self levelling system
  - "float position" function
- ▶ Backhoe equipment
  - extendable dipper stick
  - sideshift
  - 0.18 m<sup>3</sup> capacity backhoe bucket
  - extendable outriggers
  - hydraulic circuit for the rock breaker
- ▶ Closed, fully glazed cab
  - two doors
  - up-and-over rear window
  - opening door widows
  - two external rear view mirrors from the left and right sides
  - two running lights
  - two front and two rear working lights
  - rotating beacon
- ▶ Interior and controls
  - speedometer
  - heater
  - premium swivel seat with a high back, headrest, armrests, all adjustments, and seat belt
  - air flow distribution inside the cab, deflectors
  - two service brake pedals
  - tilt-adjustable steering column
  - servo power control lever to change travel direction
  - mechanical control levers for the loader and backhoe equipment
  - sun visor
  - audio pre-equipment pack
  - storage compartment
  - interior lamp
  - control lock lever



## STANDARD EQUIPMENT

### QUICK ATTACH

- ▶ Automatic version enables bucket changing from seat
- ▶ Picks up competitive buckets
- ▶ Mechanical version available
- ▶ Both versions save time and money



### HYDRAULIC BREAKER

- ▶ Max energy per blow 1100 Joules
- ▶ Blow rate 550-1100 per min
- ▶ Full range of tools



### EARTH AUGER

- ▶ Available with an offset cradle mounting
- ▶ Auger sizes from 150 mm to 900 mm
- ▶ Max oil flow for both models 95 l/min



### PALLET FORKS

- ▶ Safe working load at 500 mm load center 2500 kg
- ▶ Class 2B 100mm x 40 mm
- ▶ Weight 228 kg



## OPTIONAL EQUIPMENT

- ▶ 0.12, 0.25 and 0.31 m<sup>3</sup> capacity backhoe buckets
- ▶ 1 m<sup>3</sup> capacity general purpose loading bucket
- ▶ Fork grip for loading bucket
- ▶ Reverse bucket tip (mounted instead of teeth)
- ▶ Work attachments
- ▶ Cab air conditioner
- ▶ Front counterweight





15 Rochdelskaya st., bld. 35  
Moscow, 123022  
Phone: +7 (495) 728-49-55  
e-mail: [info@rm-terex.com](mailto:info@rm-terex.com)  
[www.rm-terex.com](http://www.rm-terex.com)



**Service and Warranty Support:**  
[service@rm-terex.com](mailto:service@rm-terex.com)  
+7 (495) 723-49-55 (доб. 73836)

The standard configuration and optionally installed equipment may vary. For more information, please contact the dealers. Contacts of dealerships are listed on the company's website. Equipment shown in the photographs and illustrations may differ from the available for ordering. Materials and specifications are subject to change without notice.

**December 2015**